

BioMedCore Inc.

Leader on Liposome Technology

BioMedCore

BioMedCore is a start-up company specialized in Liposome Technology.

BioMedCore invented a novel method to manufacture high-quality liposome.

BioMedCore provides the excellent technical service and product as follows;

A licensing of our invention and know-how on liposome technology.

A new device to manufacture liposome for a various application.

A contract manufacturing service for pharmaceutical liposome formulation.

BMC Liposome

BioMedCore's proprietary Liposome Technology provides you a high-quality liposome with excellent characteristics as follows;

- **High quality liposome** with PDI<0.2 by simple procedure (Patent pending)
- **An uniform particle size** with a choice of wide range (100~1000 nm)
- **Large inner volume** with a single to multi (fewer than five) inner layers

BMC Liposome fits to a variety of application such as Pharmaceuticals, Cosmetics, Foods and others.

Liposome Assembler

Based on the **BioMedCore's** proprietary liposome technology, a **new Liposome Assembler** is provided by **Toray Engineering Co. Ltd.**

- **Continuous system** makes your production scale flexible with the volume range of 900~9000ml/day
- **GMP operation model** is available for pharmaceutical products
- **Disposable Assembler Unit** makes the manufacturing process free of cleaning-verification routine.
- **Aseptic liposome** larger than 200nm can be prepared with in-line filter.
- **High theoretical encapsulation efficiency** is attained with the range of 40~60% for hydrophilic and 90~100% for lipophilic compounds

For more information on the Liposome Assembler, see the reverse side.

Contract Manufacturing Services of BMC Liposome

Contract manufacturing services are available through **Nipro Corporation.**



- **Technical service** is provided for development of dosage form and analytical methods.
- **Liposome formulation** is available for the various grades from test samples for pre-clinical development to products for sales.
- **Lyophilized form as well as liquid form** is available.

Find more information to receive technical services and manufacturing services on the reverse side.

Please, kindly contact us for discussion about business opportunities.



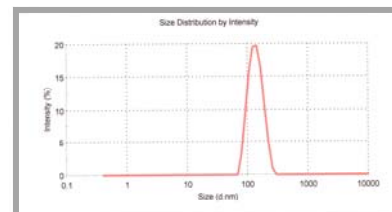
Yuichiro Satoh, D.V.M. President of **BioMedCore Inc.**

Tel : +81-45-342-5514 Skype 'satouy'

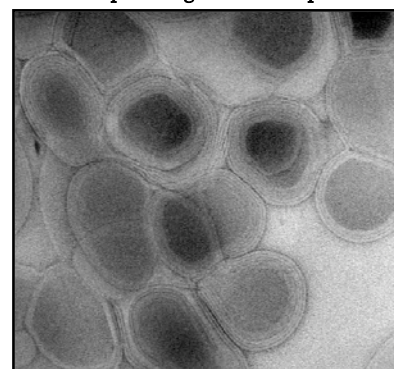
Fax : +81-45-342-5524

E-mail : satouy@bmc core.co.jp

Monodisperse pattern of BMC liposome



Microscopic image of BMC liposome



Liposome Assembler



For your consideration on our technical services and contract manufacture of BMC Liposome for pharmaceutical products

BioMedCore's excellent technical services on liposome

- **Encapsulation** of your compounds into liposome (pharmaceuticals, cosmetics, functional foods and others)
- **Preparation and characterization** of a small amount of liposome samples with your compounds encapsulated, for your evaluation *in vivo* and/or *in vitro*.
- **Preparation** of various types of liposome (ex; cationic and anionic liposome, liposome with surface modification)

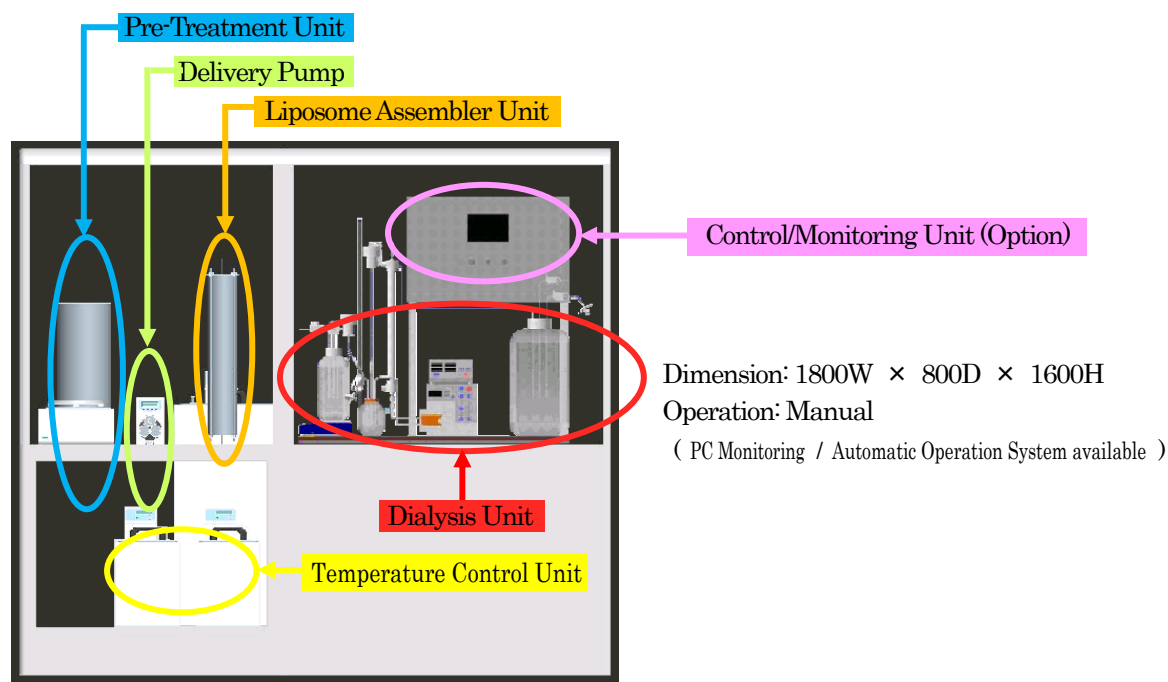
Contract manufacturing services of liposome pharmaceutical products [by Nipro corporation]

【Two steps to take before starting contract manufacturing of your pharmaceutical liposome products】

- **The first step:** We examine your formulation for the adaptability to our Liposome Assembler. Alternatively, we develop the adaptable liposome formulation for your products.
- **The second step:** We provide you a small scale manufacturing lot for your evaluation.
- **Manufacturing:** We manufacture liposome products for formulation development, for clinical and preclinical studies and for sales.

Overview of Liposome Assembler

【Provided by Toray Engineering Co. Ltd.】



Standard Models:

| Model | Maximum Flow Rates | Maximum Production Volumes (1day=7.5hr) |
|--------------------------|--------------------|---|
| General Model | | |
| Small/Experimental Scale | 2mL/min. | 900mL/day (apprx. 18g*) |
| Production Scale | 20mL/min. | 9000mL/day (apprx. 180g*) |
| GMP Model | | |
| Small/Experimental Scale | 2mL/min. | 900mL/day (apprx. 18g*) |
| Production Scale | 20mL/min. | 9000mL/day (apprx.180g*) |

*The yield of liposome varies depending on selection and concentration of lipids and particle size of products.

